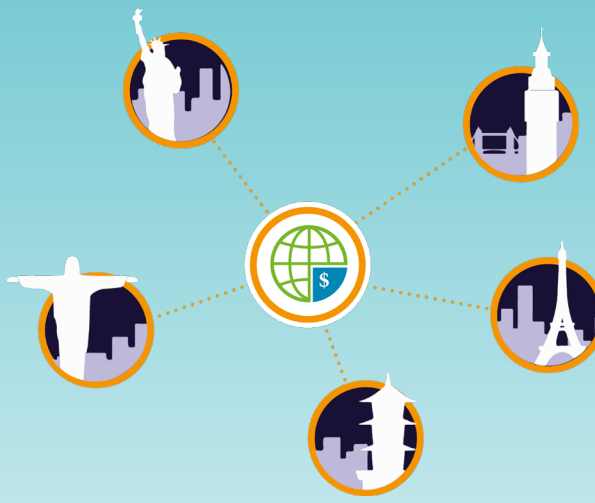




## WHAT IS A GLOBAL PAYROLL SOLUTION?



Whether your workers are expatriates or local nationals, your organisation can guarantee compliant and timely fund remittance by outsourcing international payroll duties to Mauve. Mauve works alongside your in-house accounting or HR department as a single point-of-contact across our extensive country network to standardise your global payroll processes.

### Mauve can provide:

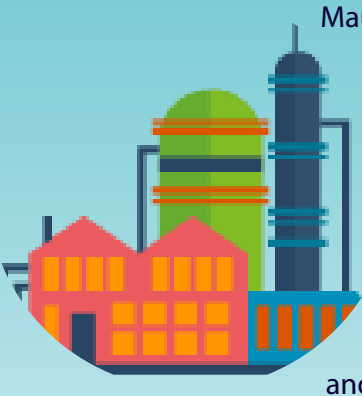
- Local payroll set-up
- Secure records and timely, detailed reporting
- Clear local payroll calculations
- Shadow payroll service in host country for non-resident employees
- Rapid movement of funds for salaries and tax remittances
- Continuous monitoring of tax regulations in host countries
- General local payroll management including registration and de-registration

## KEY BENEFITS

- Local Compliance** - Payroll legislation can differ considerably by country; Mauve's in-house expertise and global network will ensure your international payroll adheres strictly to local banking, tax and social security rules.
- Clear Reporting** - Our global payroll solution provides comprehensible salary calculations, monthly reporting and payslips for your internal records and to offer greater transparency of the process.
- Reduced Fees** - Mauve works with a global FX partner to ensure any overseas transactions processed incur 65% less in transfer costs and bank charges.
- Timely Remittance** - Wave goodbye to lengthy transfer times and banking delays; Mauve's payroll solution ensures remittance of salaries within 1 - 2 days.



## CASE STUDY - GLOBAL SUGAR CO-OPERATIVE



Mauve's client is a co-operative sugar group that manufactures materials into sugar, alcohol and starch. The company approached Mauve having reviewed their payroll processes around the world; they wanted to streamline and upgrade salary payment transactions to be cost-effective, fast, and managed consistently across their various global locations. Mauve's payroll services offer the client substantial improvements in payment timescales and greater cohesion in processes compared with managing a disjointed payroll system internally.

### BENEFITS TO CLIENT AT A GLANCE:



## WHY USE MAUVE?

Selecting the right global service provider is paramount to the success of an overseas project; in a busy marketplace, it is important to seek out the provider best suited to your organisation's ethos and goals. Since 1996, Mauve has focused on building a reputation and service portfolio that stands out from the crowd in six key ways.

- Established partner network of due-diligence checked local experts
- Original disrupters in our field – active since 1996
- Personalised service delivery
- Solutions managed in-house and via our own entities – not a middle-man!
- Second-to-none in our staff retention rates
- Excellent global response times